



PROPOSED COMPREHENSIVE ATTENDANCE AREA BOUNDARY ADJUSTMENTS

Board of Trustees Meeting

January 25, 2016

**Moisés Aguirre, Ed.D. , Assistant Superintendent
of Business Services**

Paul D. Woods, District Architect

INTRODUCTION

- Staff presented this comprehensive boundary adjustment proposal at the Board Workshop on January 14th.
- After receiving comments on the proposal, a few revisions have been made in accordance with these 3 guiding principles:
 - Balance enrollment between schools
 - Consider distance to schools
 - Consolidate middle and high school boundaries to the degree possible.
- The revisions affect Adjustment 9 and the revised proposal aligns Montgomery Middle School and Montgomery High School.

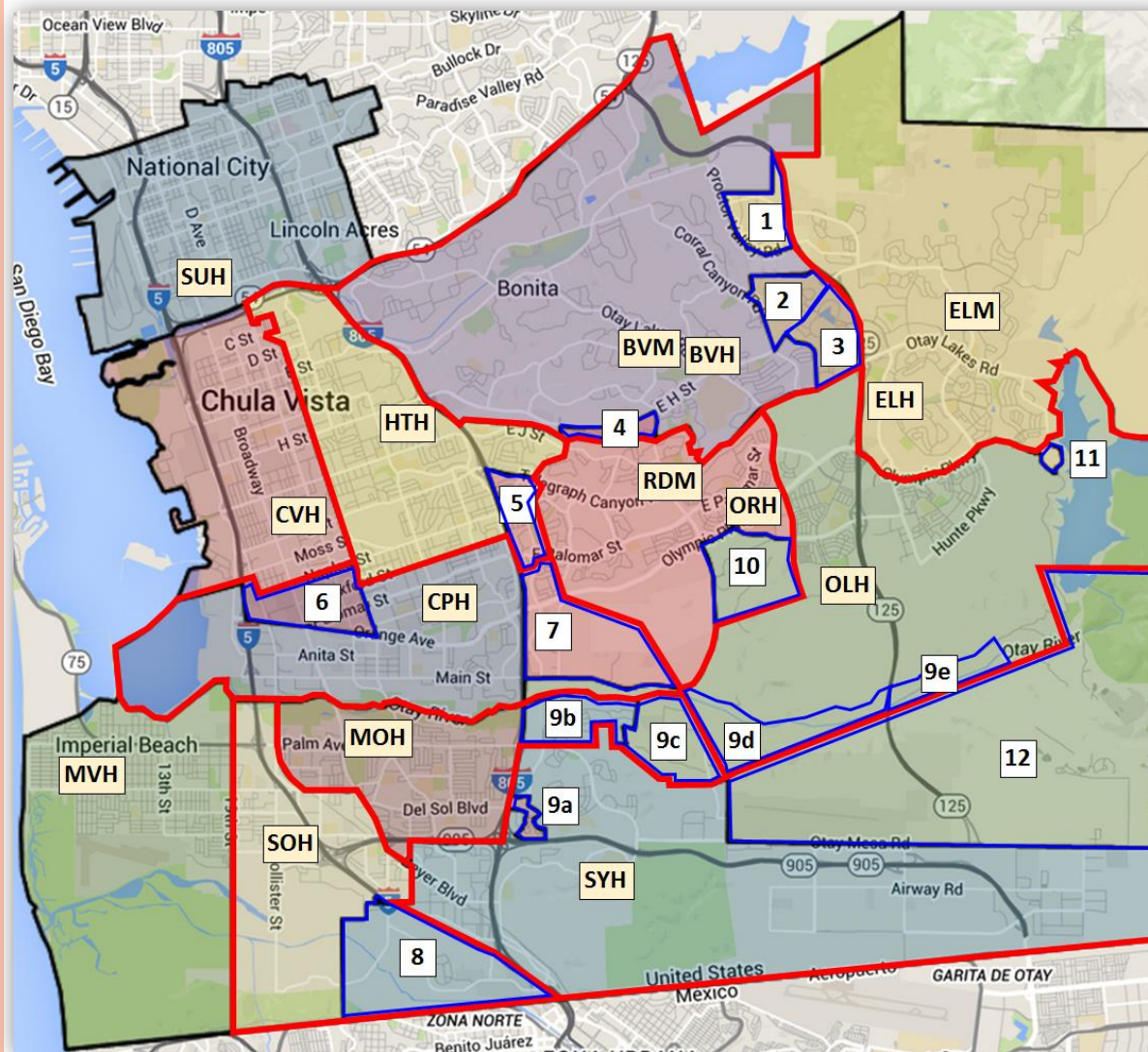
INTRODUCTION

- It has been 11 years since the last major attendance boundary change.
- In 2005 the Olympian High School attendance boundary was created.
- Although enrollment in 2015-16 is about the same as 10 years ago, the district's demographics have changed:
 - Residential development has resumed in the east.
 - Communities in the west have aged and enrollment has decreased.
- All projected enrollment changes are based on grandfathering current students at current schools and no change to transfers patterns to other schools

COMPREHENSIVE PROPOSAL

- Based on comments from the public during Long Range Facilities Master Plan meetings and staff input, the following comprehensive boundary adjustment proposal is being presented to the Board of Trustees.
- Student transportation will be affected and will need to be analyzed further.
- This comprehensive proposal has 12 boundary adjustments that accomplish the following:
 - Better balances the enrollment at high schools.
 - Eliminates optional areas.
 - Aligns more middle and high school attendance boundaries.

PROPOSED COMPREHENSIVE BOUNDARY ADJUSTMENTS (HIGH SCHOOL BOUNDARIES SHOWN)



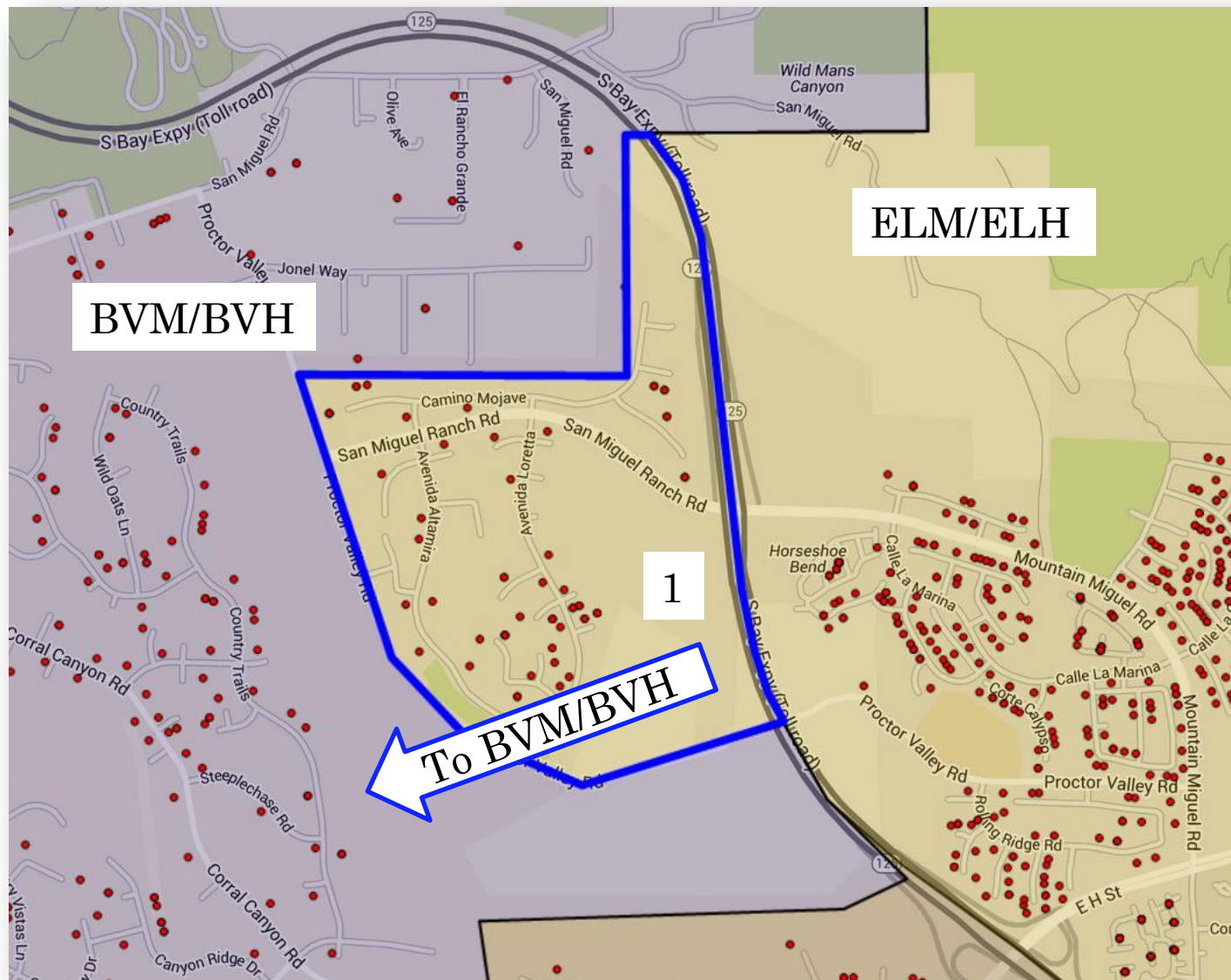
1. Move area from ELM/ELH to BVM/BVH
2. Assign area to BVM/BVH
3. Assign area to BVM/BVH
4. Assign area to BVM/BVH
5. Move area from ORH to HTH
6. Assign area to CPH
7. Move area from ORH to CPH
8. Move area from SYH to SOH
9. Move areas:
 - a. From MOH to SYH
 - b. From SYH to MOH
 - c. From OLH to MOH
 - d. From MOM to RDM (no impact)
 - e. From MOM to ELM (no impact)
10. Move area from OLH to ORH
11. Move area from ELH to OLH.
12. Move area from OLH to SYH (no impact on enrollment)

Red boundaries represent proposed new boundaries.

PROPOSED BOUNDARY ADJUSTMENT 1

- Move part of San Miguel Ranch (west of 125) from EastLake Middle and High to Bonita Vista Middle and High.
- Over 2 years, enrollment at EastLake MS will decrease and Bonita Vista MS will increase.
- Over 4 years, enrollment at Eastlake HS will decrease and Bonita Vista HS will increase.
- Bonita Vista MS and HS boundaries remain coterminous.
- About 5 incoming 7th grade students affected
- About 10 incoming 9th grade students affected.

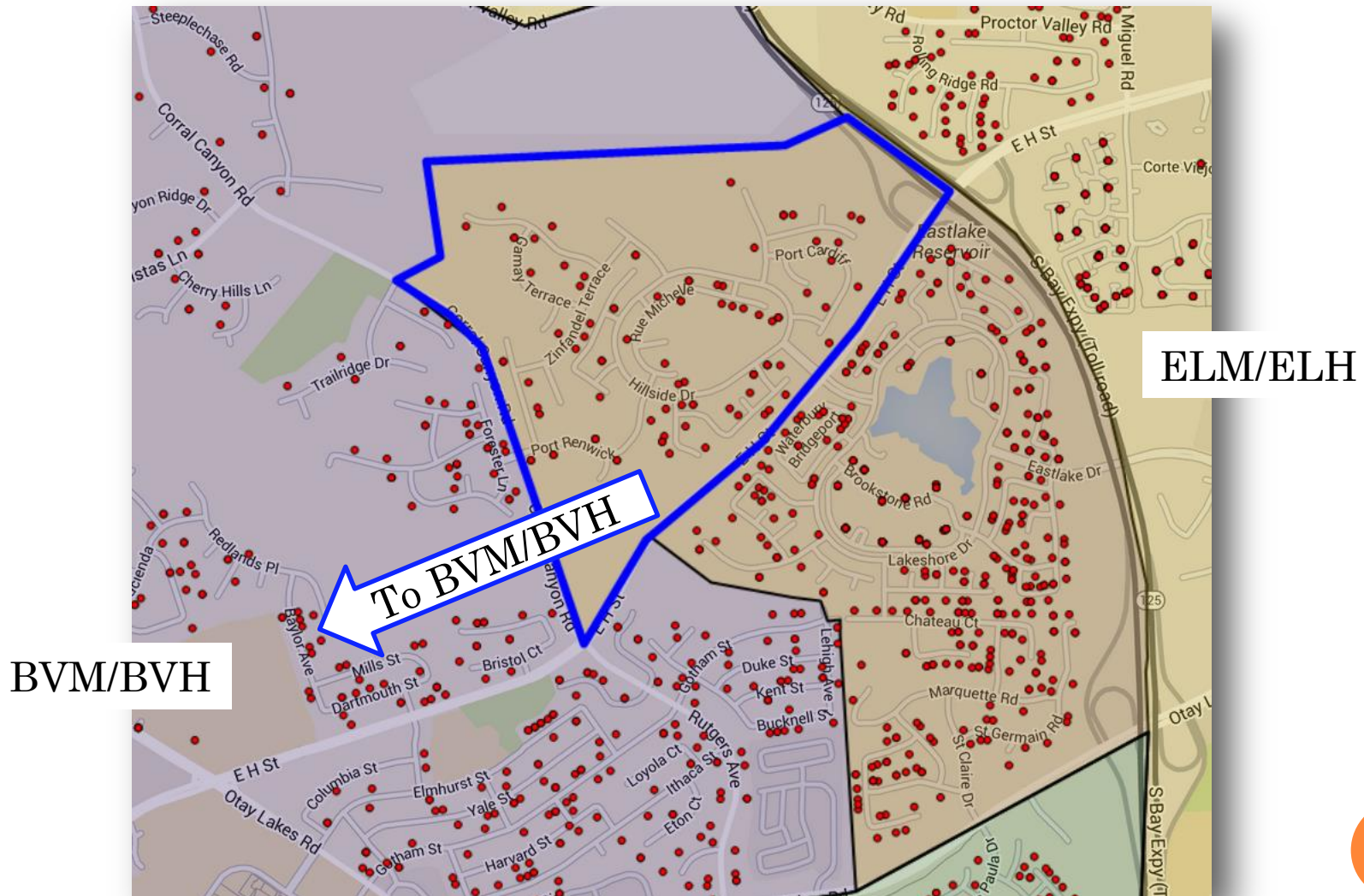
PROPOSED BOUNDARY ADJUSTMENT 1 – SAN MIGUEL RANCH (SMR)



PROPOSED BOUNDARY ADJUSTMENT 2

- This area is currently optional to Bonita Vista MS/HS or EastLake MS/HS.
- Assign this area to Bonita Vista MS and HS.
- Over 2 years, enrollment at EastLake MS will decrease and Bonita Vista MS will increase.
- Over 4 years, enrollment at Eastlake HS will decrease and Bonita Vista HS will increase.
- Bonita Vista MS and HS boundaries remain coterminous.
- About 12 incoming 7th grade students affected
- About 8 incoming 9th grade students affected.

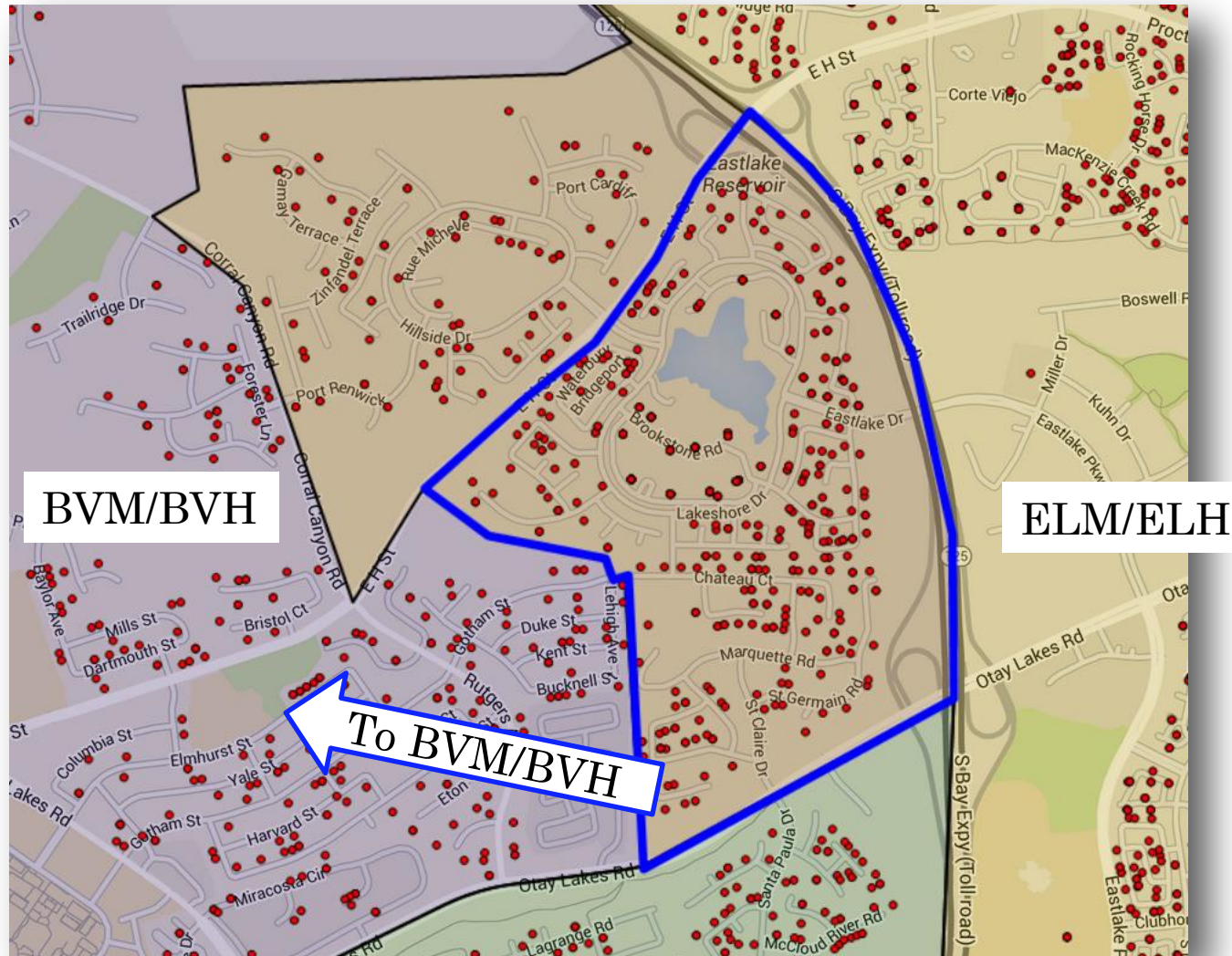
PROPOSED BOUNDARY ADJUSTMENT 2 – EASTLAKE HILLS



PROPOSED BOUNDARY ADJUSTMENT 3

- This area is currently optional to Bonita Vista MS/HS or EastLake MS/HS.
- Assign this area to Bonita Vista MS and HS.
- Over 2 years, enrollment at EastLake MS will decrease and Bonita Vista MS will increase.
- Over 4 years, enrollment at Eastlake HS will decrease and Bonita Vista HS will increase.
- Bonita Vista MS and HS boundaries remain coterminous.
- About 50 incoming 7th grade students affected
- About 60 incoming 9th grade students affected.

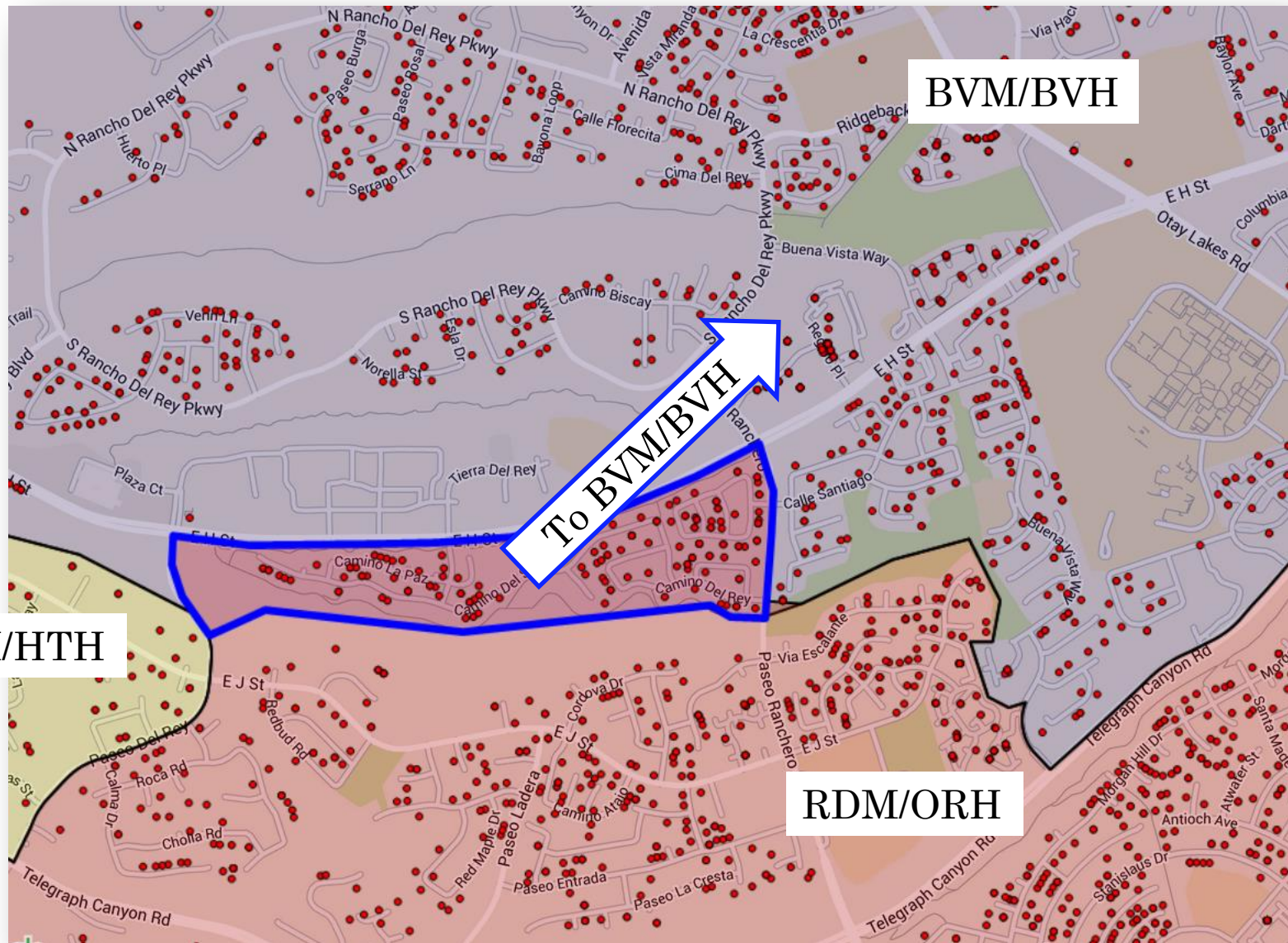
PROPOSED BOUNDARY ADJUSTMENT 3 – EASTLAKE SHORES AND ST. CLAIRE DR.



PROPOSED BOUNDARY ADJUSTMENT 4

- This area is currently optional to Bonita Vista MS/HS or Rancho Del Rey MS/Otay Ranch HS.
- Assign this area to Bonita Vista MS and HS.
- Over 2 years, enrollment at Rancho Del Rey MS will decrease and Bonita Vista MS will increase.
- Over 4 years, enrollment at Otay Ranch HS will decrease and Bonita Vista HS will increase.
- Bonita Vista MS and HS boundaries remain coterminous.
- About 22 incoming 7th grade students affected
- About 13 incoming 9th grade students affected.

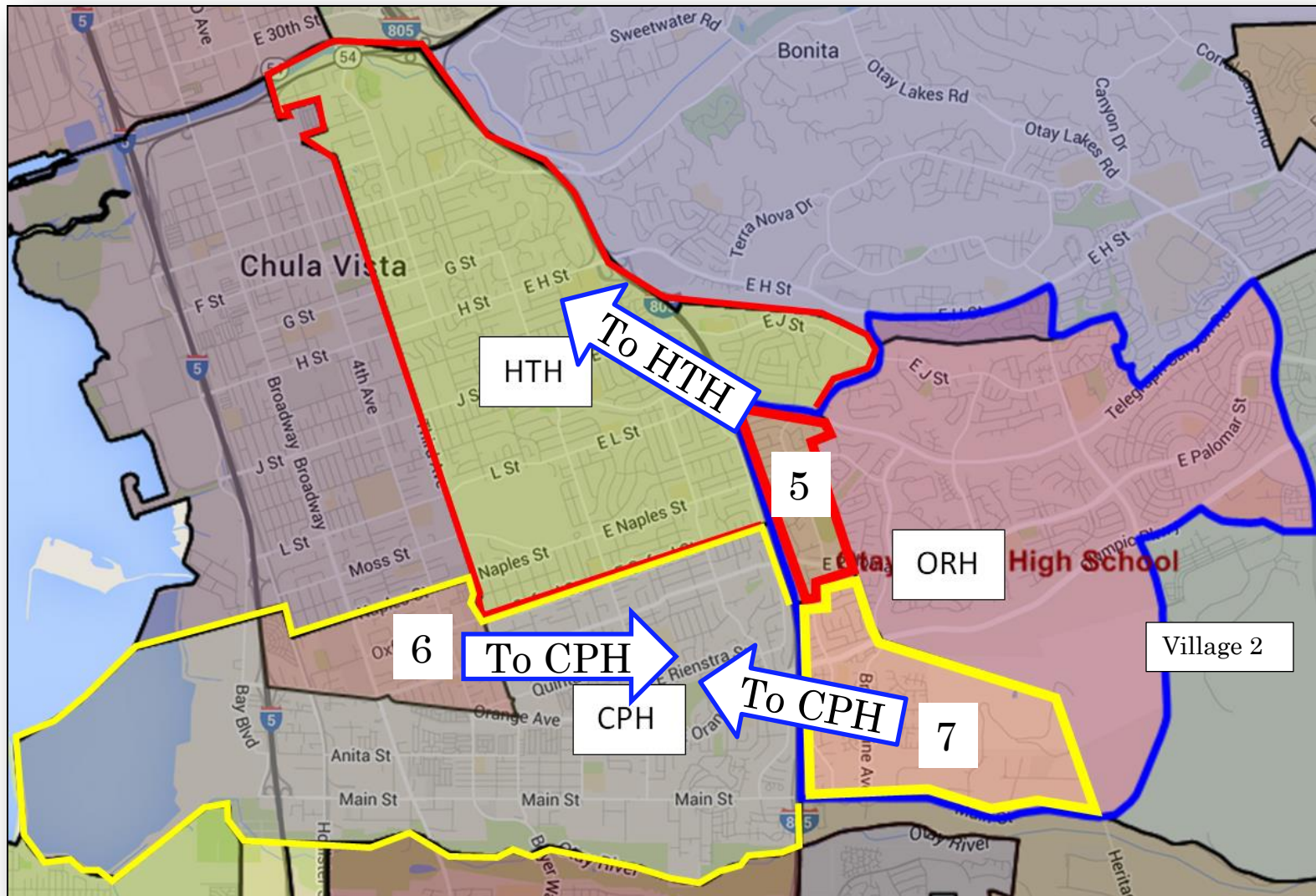
PROPOSED BOUNDARY ADJUSTMENT 4



PROPOSED BOUNDARY ADJUSTMENTS 5, 6, & 7

- Currently the Castle Park MS and HS, the Chula Vista MS and HS and the Hilltop MS and HS attendance boundaries do not match.
- The three boundary adjustments will make these middle and high school boundaries coterminous.
- Over 4 years, enrollment at Otay Ranch HS and Chula Vista HS will decrease.
- Over 4 years, enrollment at Castle Park HS and Hilltop HS will increase.

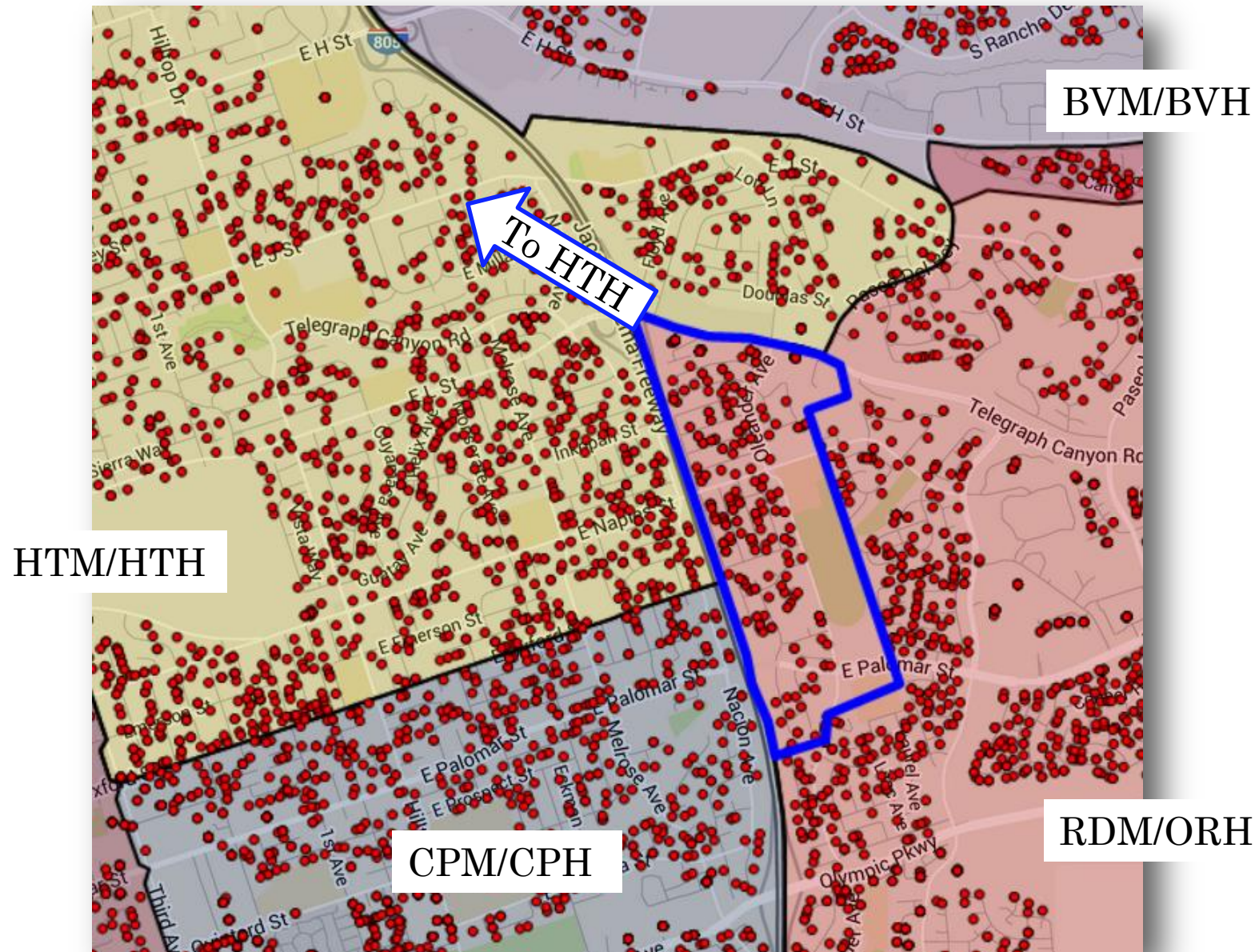
PROPOSED BOUNDARY ADJUSTMENTS 5, 6, & 7



PROPOSED BOUNDARY ADJUSTMENT 5 – HILLTOP HS

- Align the Hilltop HS boundary with the Hilltop MS boundary east of the 805.
- Over 4 years, enrollment at Otay Ranch HS will decrease.
- Over 4 years, enrollment at Hilltop HS will increase.
- This adjustment will make Hilltop MS and HS boundaries coterminous.
- About 20 incoming 9th grade students affected.

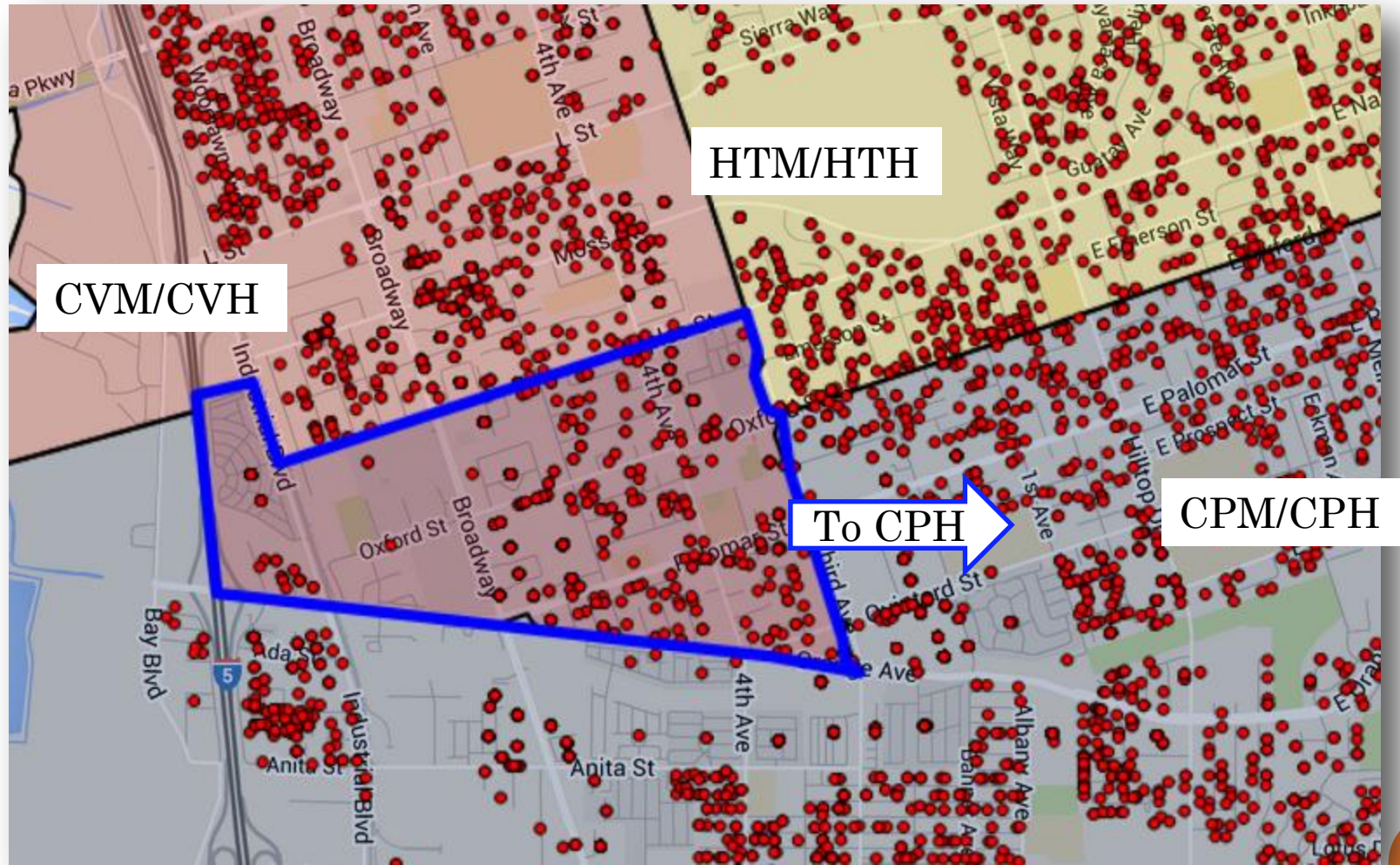
BOUNDARY ADJUSTMENT 5 – HILLTOP HS



PROPOSED BOUNDARY ADJUSTMENT 6 – THE TRIANGLE

- This area is currently optional to Castle Park HS or Chula Vista HS.
- Assign this area to Castle Park HS.
- Over 4 years, enrollment at Chula Vista HS will decrease.
- Over 4 years, enrollment at Castle Park HS will increase.
- This adjustment is one part of making Castle Park MS and HS boundaries coterminous.
- About 60 incoming 9th grade students affected.

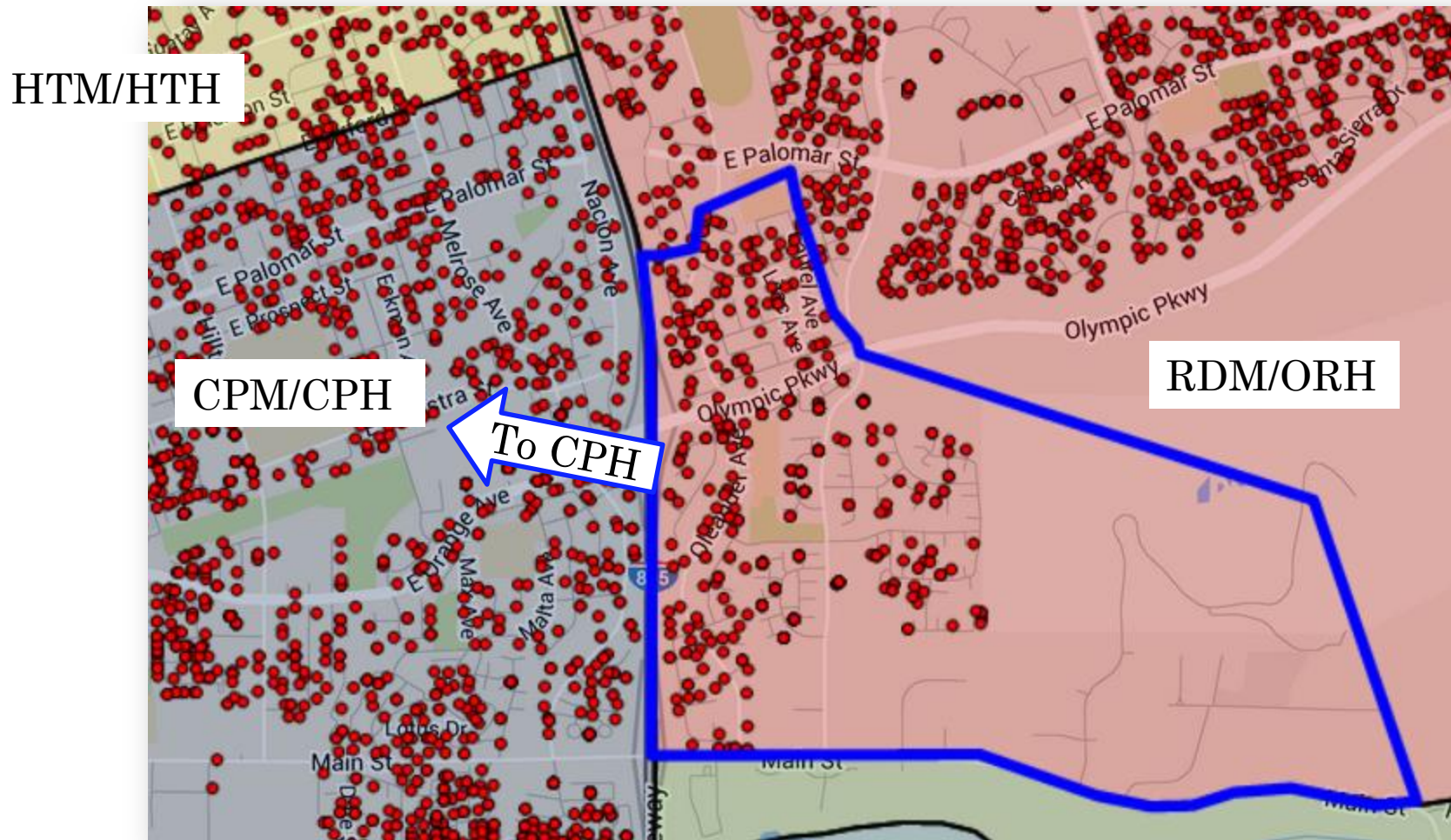
PROPOSED BOUNDARY ADJUSTMENT 6 – THE TRIANGLE



PROPOSED BOUNDARY ADJUSTMENT 7 – CASTLE PARK HS

- Align the Castle Park HS boundary with the Castle Park MS boundary east of the 805.
- Over 4 years, enrollment at Otay Ranch HS will decrease.
- Over 4 years, enrollment at Castle Park HS will increase.
- Combined with the elimination of Optional Area C, this adjustment will make Castle Park MS and HS boundaries coterminous.
- About 45 incoming 9th grade students affected.

PROPOSED BOUNDARY ADJUSTMENT 7 – CASTLE PARK HS



PROPOSED BOUNDARY ADJUSTMENT 8 – SOUTHWEST HS

- Move the area south of the 5 from San Ysidro HS to Southwest HS.
- Over 4 years, enrollment at San Ysidro HS will decrease.
- Over 4 years, enrollment at Southwest HS will increase.
- This adjustment does not affect middle school boundaries.
- All of the Willow Elementary and San Ysidro Middle School attendance boundaries will be within the Southwest HS boundaries.
- About 135 incoming 9th grade students affected.

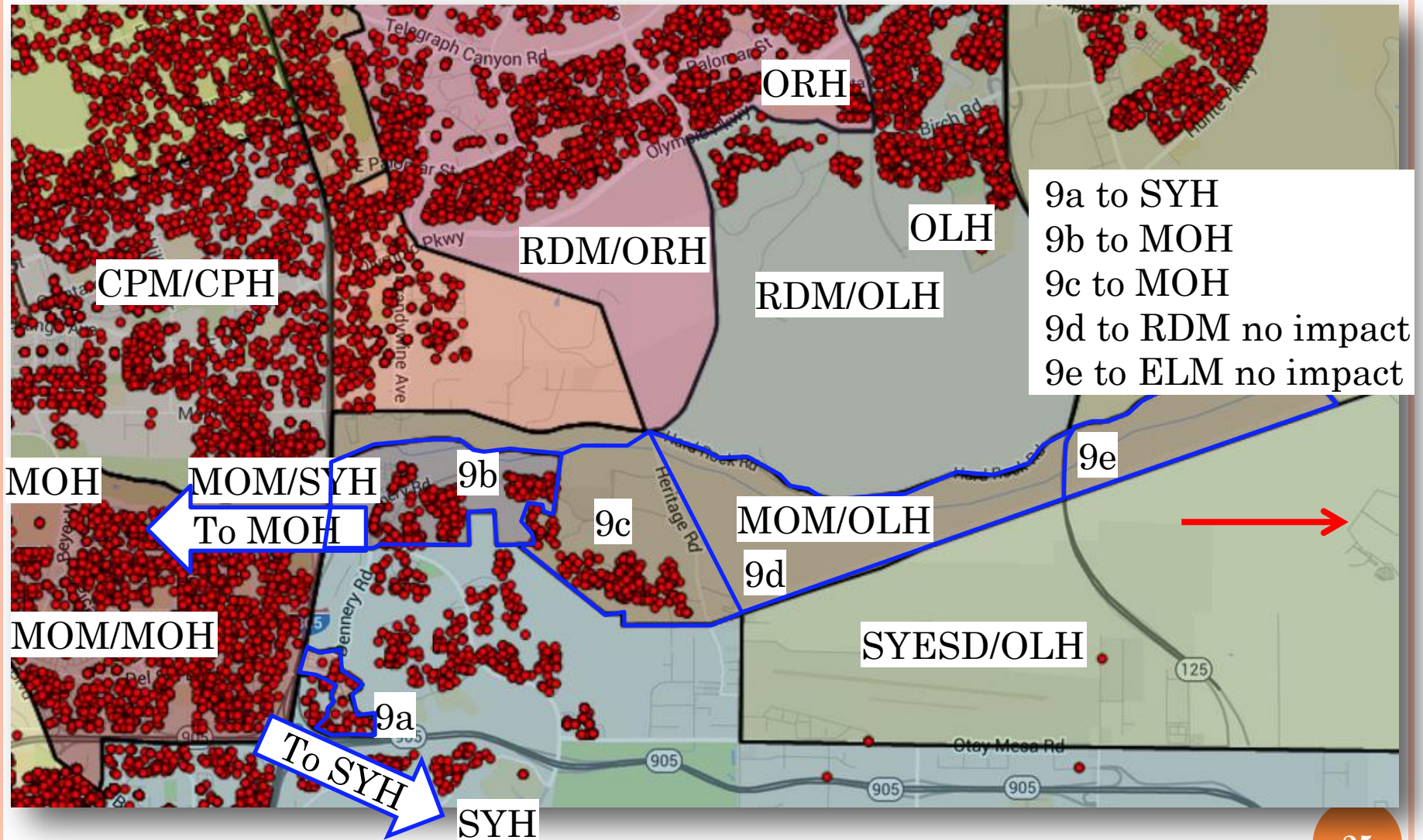
MOM/MOH



PROPOSED BOUNDARY ADJUSTMENT 9

- In order to align the Montgomery Middle School and Montgomery High School boundaries:
 - 9a Move the Del Sol Blvd residential area (east of the 805) from Montgomery HS to San Ysidro HS. Most students already attend San Ysidro HS via transfer. About 3 incoming 9th grade students affected.
 - 9b Move the Dennerly Road residential area (north of Palm Ave) from San Ysidro HS to Montgomery High School. About 18 incoming 9th grade students affected.
 - 9c Move the Avenida De Las Vistas residential area (near the Amphitheater) from Olympian HS to Montgomery HS. About 40 incoming 9th grade students affected.
 - 9e and 9f are open space and the areas will be moved to Rancho Del Rey MS and Eastlake MS respectively for geographic alignment with the high schools.
- Over 4 years, enrollment at Olympian HS and San Ysidro HS will decrease.
- Over 4 years, enrollment at Montgomery HS will increase.

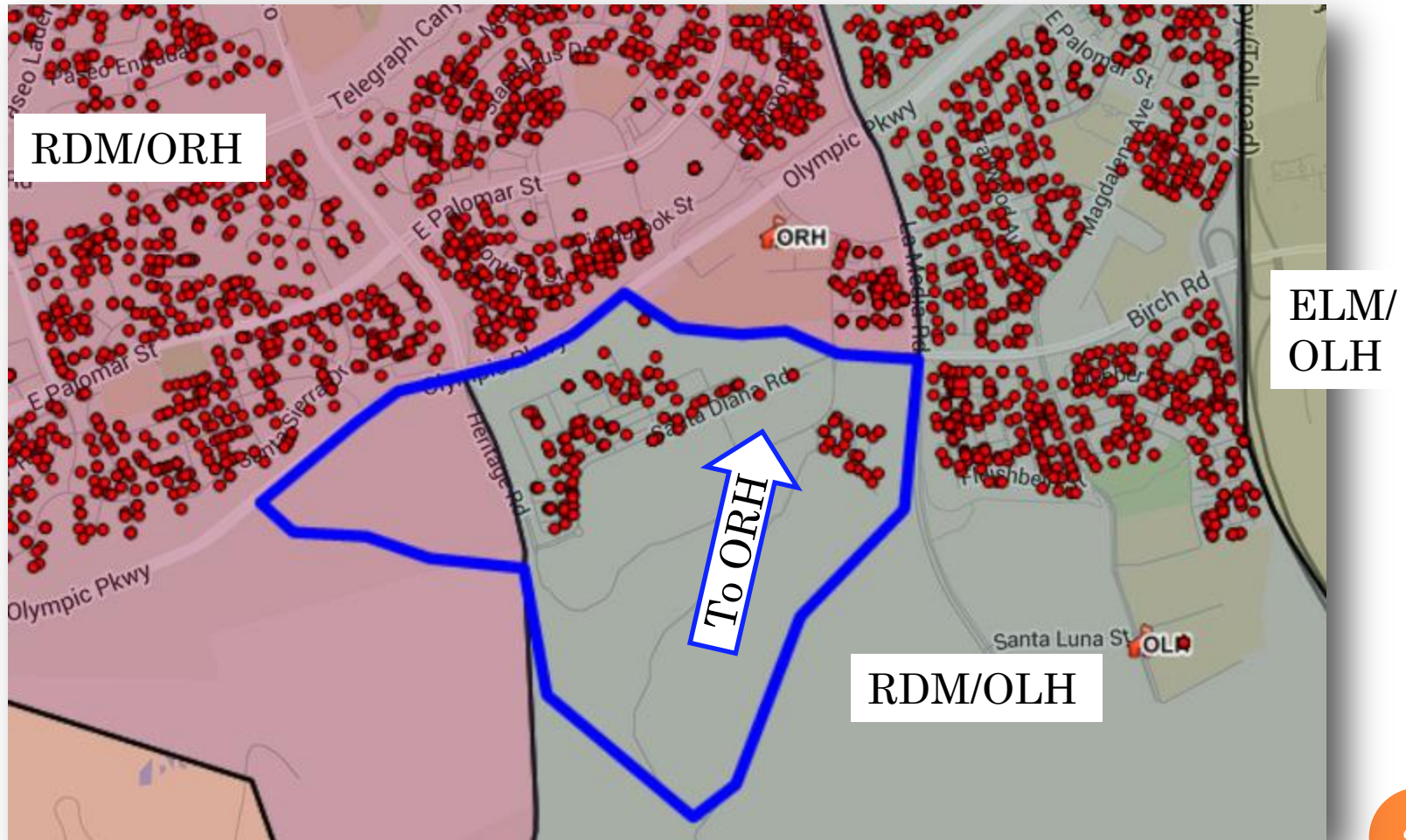
PROPOSED BOUNDARY ADJUSTMENT 9



PROPOSED BOUNDARY ADJUSTMENT 10 – VILLAGE 2 (V2)

- Boundary adjustments 5 and 7 will decrease enrollment at Otay Ranch HS which allows the adjacent Village 2 to attend Otay Ranch HS instead of Olympian HS.
- Some residential backyards overlook Otay Ranch HS, but are in the Olympian HS attendance area.
- Over 4 years, enrollment at Olympian HS will decrease and Otay Ranch HS will increase.
- Additional enrollment increases at Otay Ranch HS will come from new residential development.
- This adjustment does not affect the Rancho Del Rey MS attendance area.
- About 19 incoming 9th grade students affected.

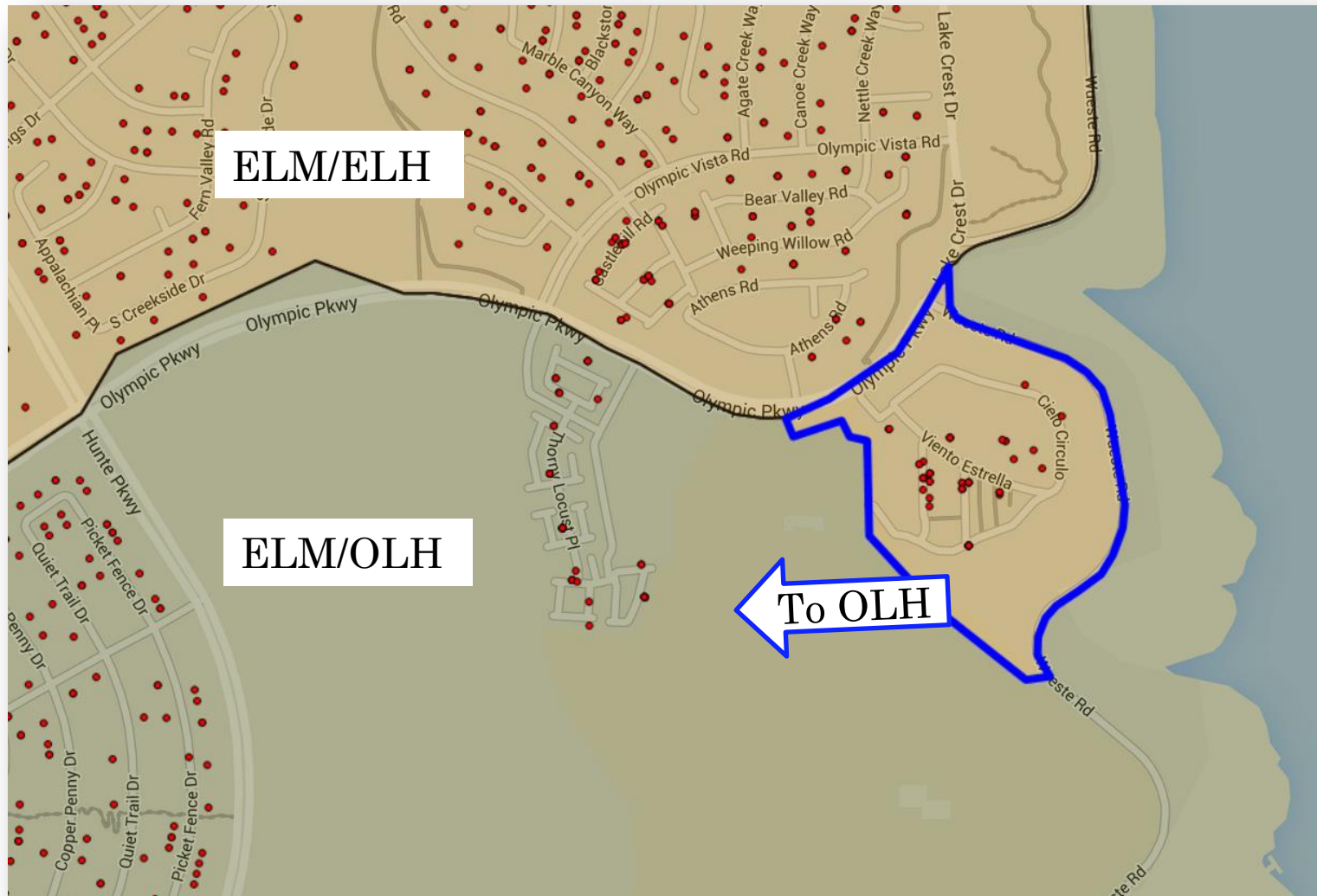
PROPOSED BOUNDARY ADJUSTMENT 10 – VILLAGE 2



PROPOSED BOUNDARY ADJUSTMENT 11 – OLYMPIC POINTE

- Move the Olympic Pointe area from Eastlake HS to Olympian HS.
- The result will be that all areas south of Olympic Parkway attend Olympian HS.
- This adjustment matches the CVESD elementary attendance boundary in the area.
- About 9 incoming 9th grade students affected.

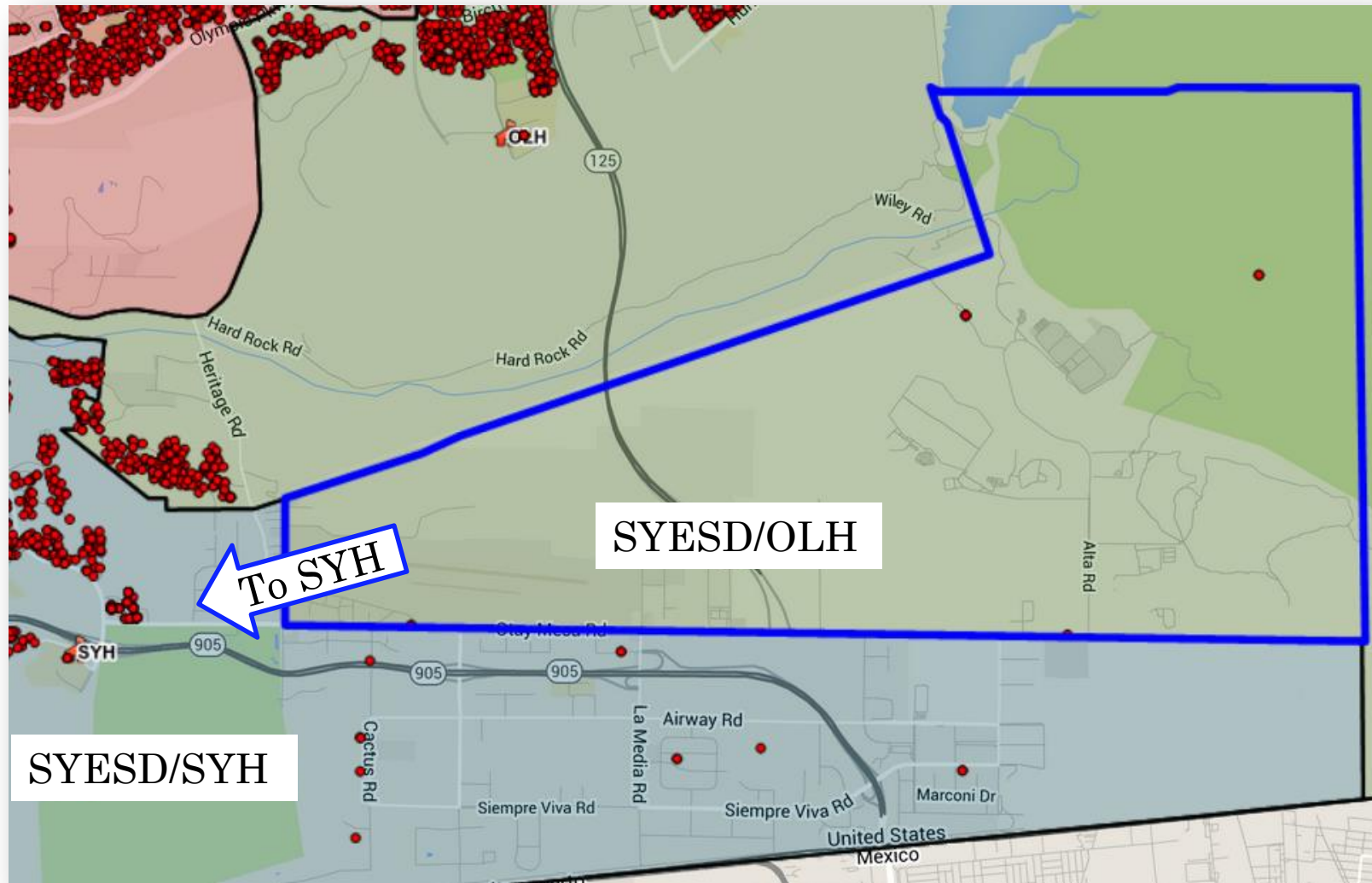
PROPOSED BOUNDARY ADJUSTMENT 11 – OLYMPIC POINTE



PROPOSED BOUNDARY ADJUSTMENT 12

- Move the San Ysidro Elementary School District area that is within the Olympian HS attendance area from Olympian HS to San Ysidro HS.
- This a technical adjustment that does not affect enrollment because all 7 existing HS students attend either San Ysidro HS or Palomar HS.

PROPOSED BOUNDARY ADJUSTMENT 12



SUMMARY OF PROPOSED ENROLLMENT CHANGES

Estimated Annual Change to Incoming 7th or 9th graders

School	Proposed Attendance Area Adjustment No.											Total	
	1 SMR	2 A No.	3 A So.	4 B	5 HTM	6 C	7 CPM	8 SOH	9 3 areas	10 V2	11 OLH		
BVM	+5	+12	+50	+22								+89	BVM
ELM	-5	-12	-50									-67	ELM
RDM				-22								-22	RDM
BVH	+10	+8	+60	+13								+91	BVH
CPH						+60	+45					+105	CPH
CVH						-60						-60	CVH
ELH	-10	-8	-60								-9	-87	ELH
HTH					+20							+20	HTH
MOH									+55			+55	MOH
OLH									-40	-19	+9	-50	OLH
ORH				-13	-20		-45			+19		-59	ORH
SOH								+135				+135	SOH
SYH								-135	-15			-150	SYH

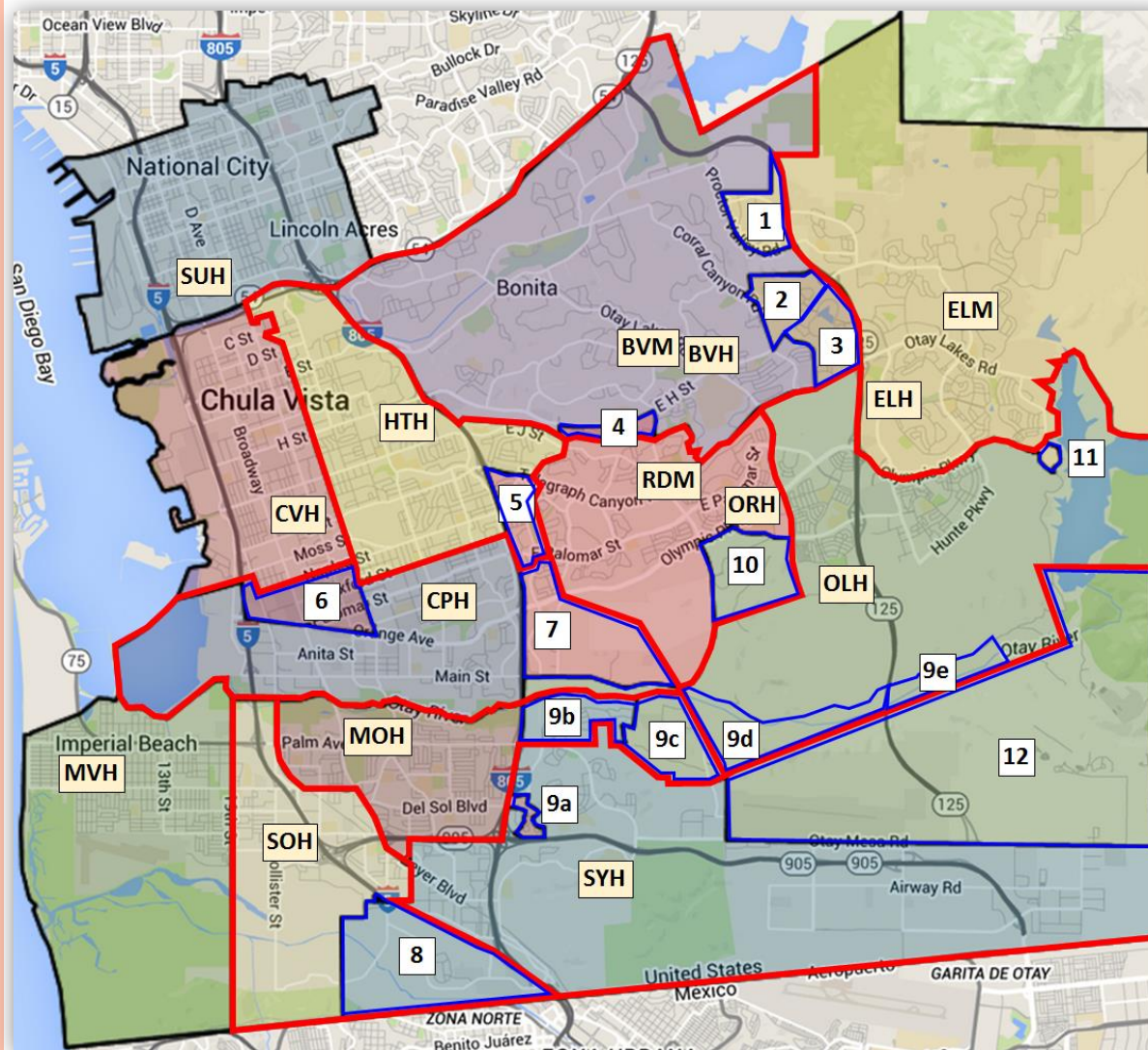
Total Current Students potentially affected by the change:

15	20	110	35	20	60	45	135	55	19	9	523
----	----	-----	----	----	----	----	-----	----	----	---	-----

SUMMARY

- Three guiding principles:
 - Balance enrollment between schools
 - Consider distance to schools
 - Consolidate middle and high school boundaries to the degree possible. Newly coterminous boundaries:
 - Castle Park Middle and High
 - Hilltop Middle and High
 - Chula Vista Middle and High
 - Montgomery Middle and High
- Attendance boundaries were last changed in 2005.
- Phased in process over four years.
- Grandfathering provisions for current students.
- Will be revisited in the future when new schools are built.

QUESTIONS, DISCUSSION AND ACTION



1. Move area from ELM/ELH to BVM/BVH
2. Assign area to BVM/BVH
3. Assign area to BVM/BVH
4. Assign area to BVM/BVH
5. Move area from ORH to HTH
6. Assign area to CPH
7. Move area from ORH to CPH
8. Move area from SYH to SOH
9. Move areas:
 - a. From MOH to SYH
 - b. From SYH to MOH
 - c. From OLH to MOH
 - d. From MOM to RDM (no impact)
 - e. From MOM to ELM (no impact)
10. Move area from OLH to ORH
11. Move area from ELH to OLH.
12. Move area from OLH to SYH (no impact on enrollment)

Red boundaries represent proposed new boundaries.